

HANSA-FLEX Universal Quick Disconnect Coupling(UQDC)



HANSA-FLEX UQDC is designed for thermal management applications, available in 4 sizes and has 2 color options. It complies with OCP (Open Compute Project) and exceeds requirements of specified performance characteristics. HANSA-FLEX UQDC offers color identification (red and blue) and guarantees 100% leak testing.

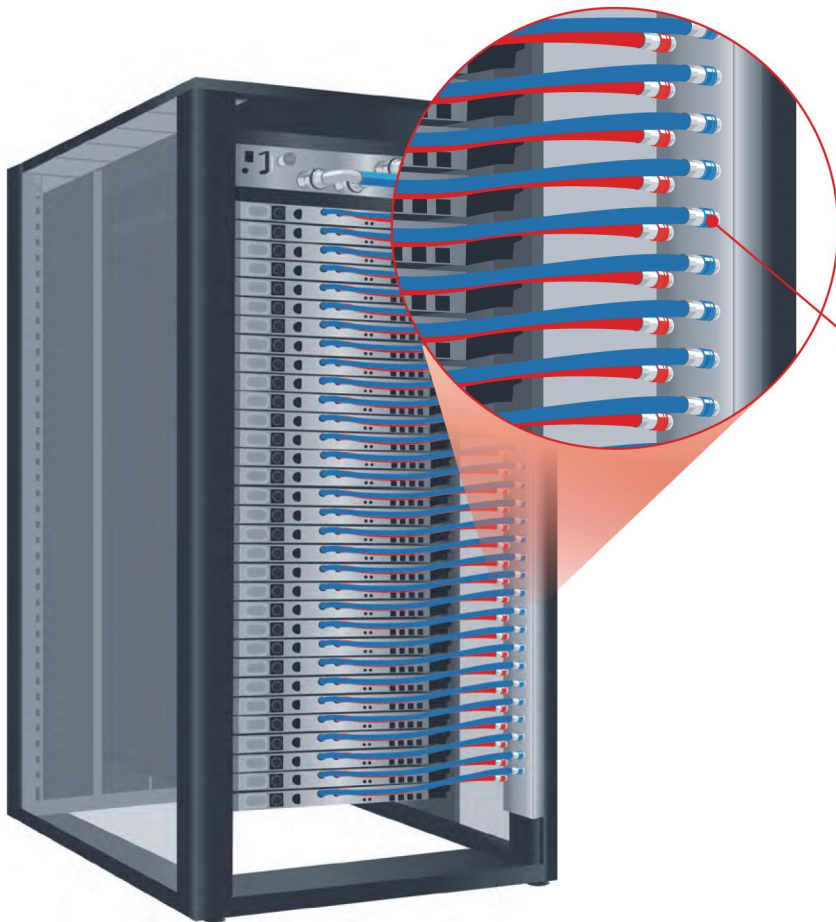
Product Features

- Designed per OCP (Open Compute Project) **UQDC** specification
- Push-to-connect design
- High flow and no spillage
- Double shut off - flat face valves
- Exceeds OCP flow ratings at least by 25% resulting in reduction in overall energy consumption
- Best in class force to connect
- Standard material: 304 stainless steel provides broad fluid compatibility
- Standard seal material: EPDM
- Color anodized aluminum sleeves
- Color coded (red/blue) sleeves on socket and O-rings on plug
- Wide range of terminal end options: BSPP on plug and push on hose on socket. Additional configurations available upon request
- Operating temperature -40°C to +150°C
- Typical working pressure: 6.9 Bar, up to 20 bar for smaller sizes

Solutions to your **liquid cooling challenges**

HANSA-FLEX direct-to-chip cooling solutions extend into the racks through efficient routing of flexible, kink-free hoses, and leak free, couplings.

HANSA-FLEX has a comprehensive feature of premium fluid conveyance products to meet your thermal management system needs.



UQDC
Universal quick disconnect coupling

Designed for high flow rate and no spillage, the UQDC coupling is perfect for in-rack applications with smaller hose lines.



Size	Body Size	Nominal Flow Diameter	Max operating pressure			Min burst pressure			Rated Flow	Cv Value	Air Inclusion	Fluid Loss
			Connected	Socket / Female Half	Plug / Male Half	Connected	Socket / Female Half	Plug / Male Half				
	(mm)	(bar)	(bar)	(bar)	(bar)	(bar)	(bar)	(lpm)	(gpm)	-	cc. max.	cc. max.
UQDC02	2.8	20	20	20	60	60	60	2.1	0.6	0.33	0.004	0.007
UQDC04	5.5	16	16	16	48	48	48	6.4	1.7	1.37	0.024	0.01
UQDC06	6.3	6.9	6.9	6.9	20.7	20.7	20.7	11.4	3.0	2.37	0.027	0.022
UQDC08	8.9	6.9	6.9	6.9	20.7	20.7	20.7	17.8	4.7	5.32	0.029	0.03

Size	Performance Parameters		
	Force to Connect	Recommended Torque	
	N	BSP Size	N-m
UQDC02	48	1/8"	8-9
UQDC04	50	3/8"	18-20
UQDC06	73	3/8"	18-20
UQDC08	87	1/2"	34-37

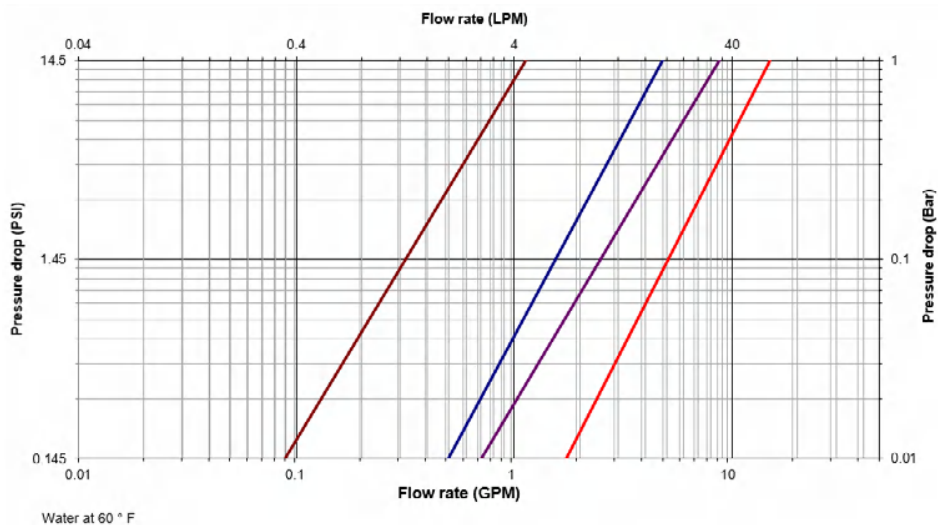
Applications & Markets

- Liquid cooling application
- Data center application

Seal Elastomer Data

Seal Elastomer	P/N Code	Operation Temperature Range	
		C°	F°
EPDM	-	-40° C +150° C	-40° F +302° F

Flow Data



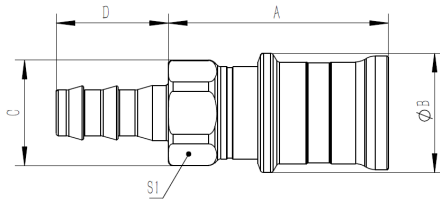


Figure 1
Push on socketless fitting

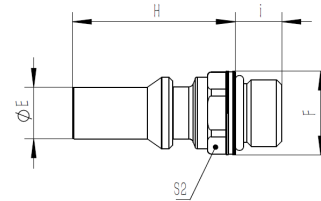


Figure 2
Male ORB ISO 1179-3

DN	Part number	Details		Dimensions				
		Thread / end size	Fig.	A	B	C	D	S1
		Hose Tail	n°	(mm)	(mm)	(mm)	(mm)	(mm)
DN02	SKM-UQDC-02-PN-E-VA	1/4	1	40	18.8	16.5	19.5	15
DN04	SKM-UQDC-04-PN-E-VA	3/8	1	48	26	23	24.5	21
DN06	SKM-UQDC-06-PN-E-VA	1/2	1	53.5	29.5	27.5	27.8	25
DN08	SKM-UQDC-08-PN-E-VA	5/8	1	60	37	34	38	30

Note 1: To obtain connected length of coupling, add dimensions A (Fig. 1) and G (Fig. 2) together.

Note 2: For color options—R suffix corresponds to RED and—B suffix to BLUE

DN	Part number	Details		Dimensions				
		Thread / end size	Fig.	E	F	I	H	S2
		BSP	n°	(mm)	(mm)	(mm)	(mm)	(mm)
DN02	SKS-UQDC-02-HR02-E-VA	1/8	2	6.72	17.32	9.1	23.9	15
DN04	SKS-UQDC-04-HR06-E-VA	3/8	2	11.19	18	10	35	16
DN06	SKS-UQDC-06-HR06-E-VA	3/8	2	14.3	23.8	11	43	21
DN08	SKS-UQDC-08-HR08-E-VA	1/2	2	17.48	27	12.7	48.3	24

Note 1: To obtain connected length of coupling, add dimensions A (Fig. 1) and G (Fig. 2) together.

Note 2: For color options—R suffix corresponds to RED and—B suffix to BLUE